



Narracan P.S. 2295
Est. 1893

Narracan Primary School Newsletter

32 School Road
Narracan, Vic, 3824
Ph: 03 5634 8215
narracan.ps@edumail.vic.gov.au
Web: www.narracanps.vic.edu.au

VOLUME 17, ISSUE 7 DATE 5TH MAY 2017

INSIDE
THIS
ISSUE:

Principal's Report

Principal's Report 1

Reminders & Newsletter Dates 2

Bus Business 2

Birthday Corner 2

School Council Meeting

We have our next School Council meeting on **Tuesday 9th May** at 3:45pm in the staff room. All are welcome to attend.

Mother's Day Raffle

The school is seeking **donations of baskets** to make up prizes for our Mother's Day Raffle. We need donated baskets at school by **Monday 8th May** so the hampers can be put together. **Please return all tickets and monies to the school by Wednesday 10th of May.** The raffle will be **drawn on Friday 12th May.** Thank-you.

Narracan East ANZAC Day Ceremony

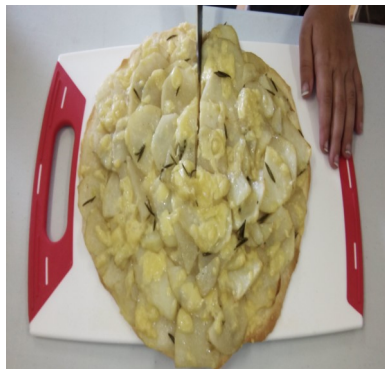


Thank-you to Ruben & Jack for representing our school community and laying our wreath at the Narracan East Anzac Day Ceremony.



Stephanie Alexander Kitchen Garden Program

Last week the big room students made, from scratch, a basic pizza dough to make potato & rosemary pizzas. Then for dessert they made fig tarts with brown sugar mascarpone. Our cooking is always shared with the little room and staff. Please find attached to this newsletter



our yummy recipes. Gumnuts Playgroup

Gumnuts Playgroup meets again on Monday the 8th of May at 9:30 am.

NAPLAN Test Dates

For the students in Years 3 and 5 the NAPLAN testing will be conducted this term, starting with Language Conventions and Writing on Tuesday 9th May.

Reading on Wednesday 10th May. Followed by Numeracy on Friday 11th May.

Hot Lunches

A reminder that in terms 2&3, lunches may be sent to school to be heated in the oven. Please ensure **clearly named** food items are wrapped in foil, or placed in an oven-proof container, ready to be placed in the school oven at morning play time.

Outstanding Money

Statements were sent home at the end of last term. **Accounts for Term 1 are now overdue.** Please make payments as soon as possible.

Walk Safely to School Day

On Friday 19th May we will participate in "Walk To School Day". Children will be dropped off at the Narracan Hall and walk with the teachers and parent helpers to school. So please come and join us on our walk to school.

Sporting Schools-Soccer

The students are enjoying their soccer clinic on Thursdays and are learning valuable skills. The sporting grant also included money for new equipment such as shin guards, gloves and soccer balls which we have purchased.

Regards, Kevin.

REMINDERS

2017 TERM 2

GUMNUTS PLAYGROUP

9:30 am

Mon 8th, 22nd May
Mon 5th, 19th June

SPORTS CLINIC

SOCCER-

Thursdays

May 11th, 18th & 25th

SCHOOL COUNCIL

Tue 9th May at 3:45 pm

MOTHER'S DAY RAFFLE

Tickets and money
returned Wed 10th May
Drawn 12th May

NAPLAN

Grades 3 and 5
May 9th, 10th and 11th

WALK TO SCHOOL

Fri 19th May
Beginning at Narracan Hall

QUANTUM SCIENCE

EXCURSION

Grades 4, 5 & 6 ONLY-
Mon 22nd May

MARC VAN

Dates 17th, 31st May
14th June

MELBOURNE ART CENTRE

EXCURSION

The Wolf and Peter
Performance— Thu 29th
June

END OF TERM 2

Fri 30th June
Early finish **2:00 pm**

FUTURE DATES

*Forest Lodge Camp— Gr
3/4 Sept 6th-8th

*Quantum Science

Excursion-Gr 2/3 Sept 11th
Gr Prep/1 Oct 13th

*Ballarat Camp— Gr5/6

Nov 15th— 17th

*Prep/1 Sleepover— Term 4

Date yet to be decided.

Bus Business

Bus Monitor:

Allana & Laedy

Best on Bus:

Quynh Anh and Sienna

Please contact our bus driver, Ken Grant on his mobile 0400 563 334, from 7.00 a.m. if there is a change in your usual routine.

Please advise Ken if your child/children will not be attending school or if you need to arrange a change of pickup. Don't forget to include your family name

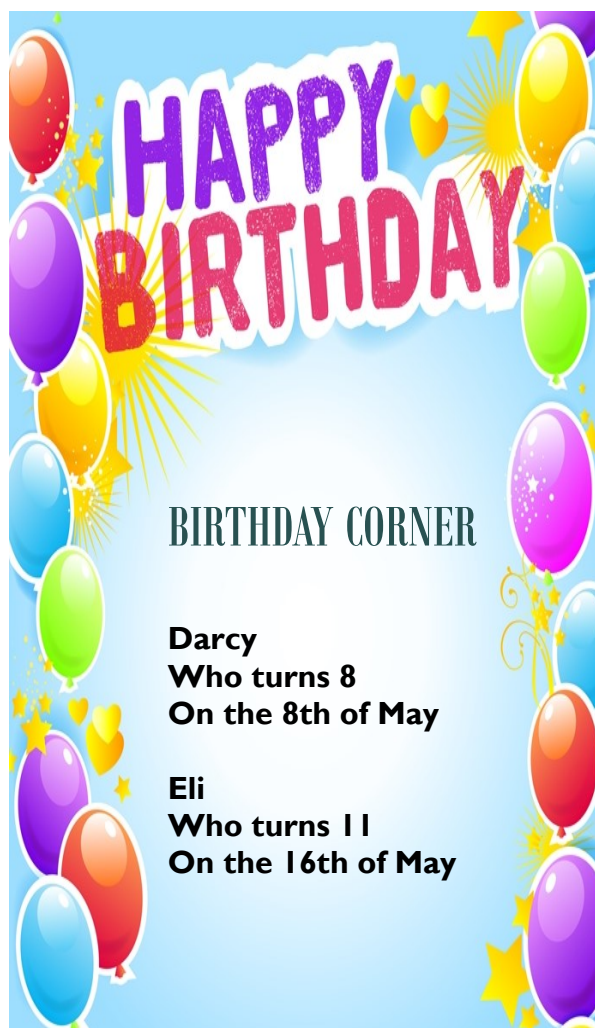


in the text message.

Please ensure your bus payments are kept up to date. \$20 per week per child. A cash tin is on the bus daily to receive bus or any other payments to the school.

A reminder that payments need to be made each fortnight for bus travel. If families be-

come four or more weeks behind in their payments then the child/children will NOT be allowed to travel on the school bus until what is owing is paid.



Newsletter Dates for Term 2

The newsletter will be sent home on the
Following Fridays—
May **5th** and **19th** and June **2nd**, **16th** and
30th